

UNCLASSIFIED

I Marine Expeditionary Force Operational Overview



Colonel Paul Miller, USMC
I Marine Expeditionary Force

UNCLASSIFIED



UNCLASSIFIED

Agenda

1. How We Organize to Fight
2. Mission
3. Organization / Locations
4. Mission Essential Task List
5. Focus Areas
6. Contingency Responsibilities & Crisis Response Capabilities
7. 1st Marine Expeditionary Brigade (MEB)
8. Marine Expeditionary Unit (MEU)

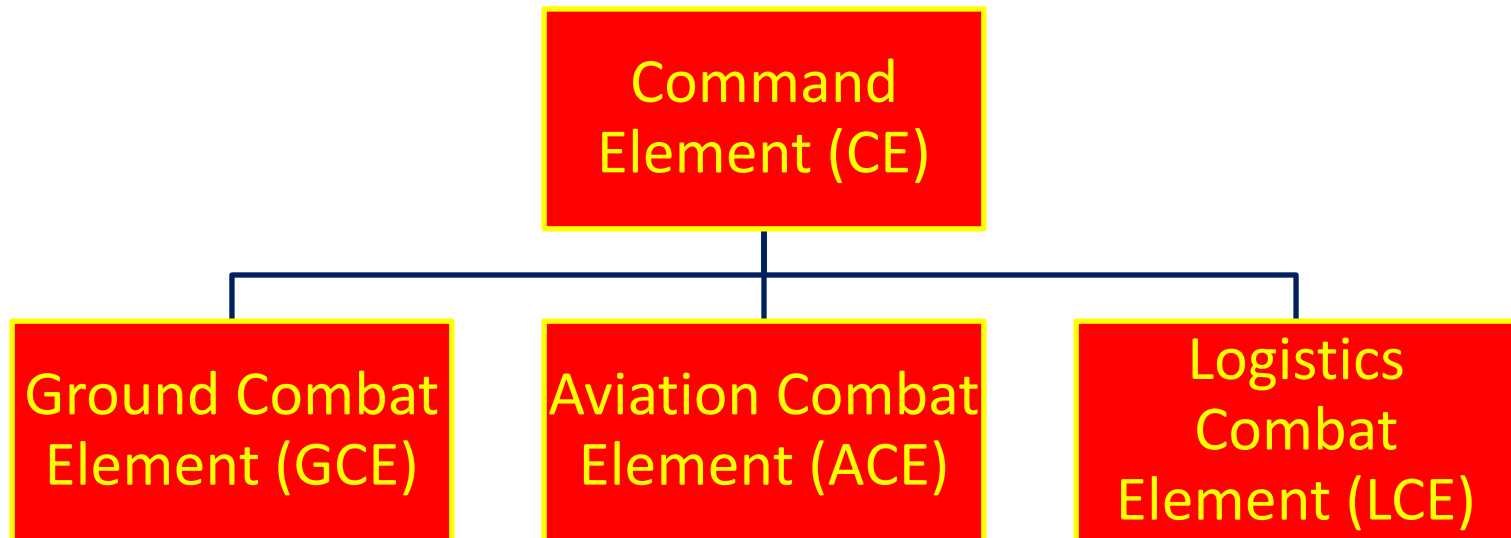
UNCLASSIFIED

How we organize to fight

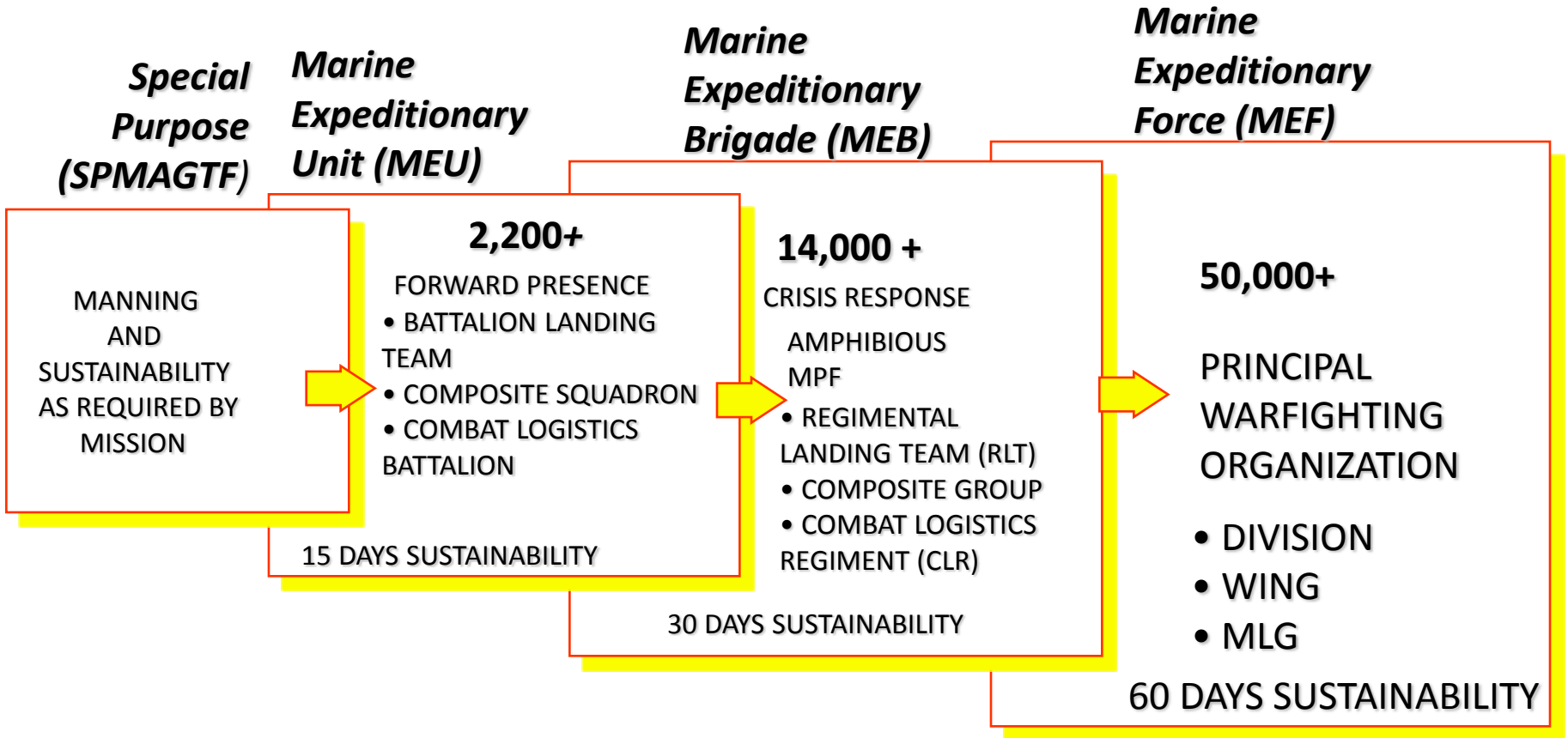
Marine Air-Ground Task Force

Scalable - based on the mission

Not a unit; it is an organizational construct



Marine Air Ground Task Force



Forward Presence

Deterrence

Deploy Decisive Force

LOW

FORCES MATCHED TO MISSION

HIGH

Peace / MOOTW

Small Scale Contingency

Major Theater War



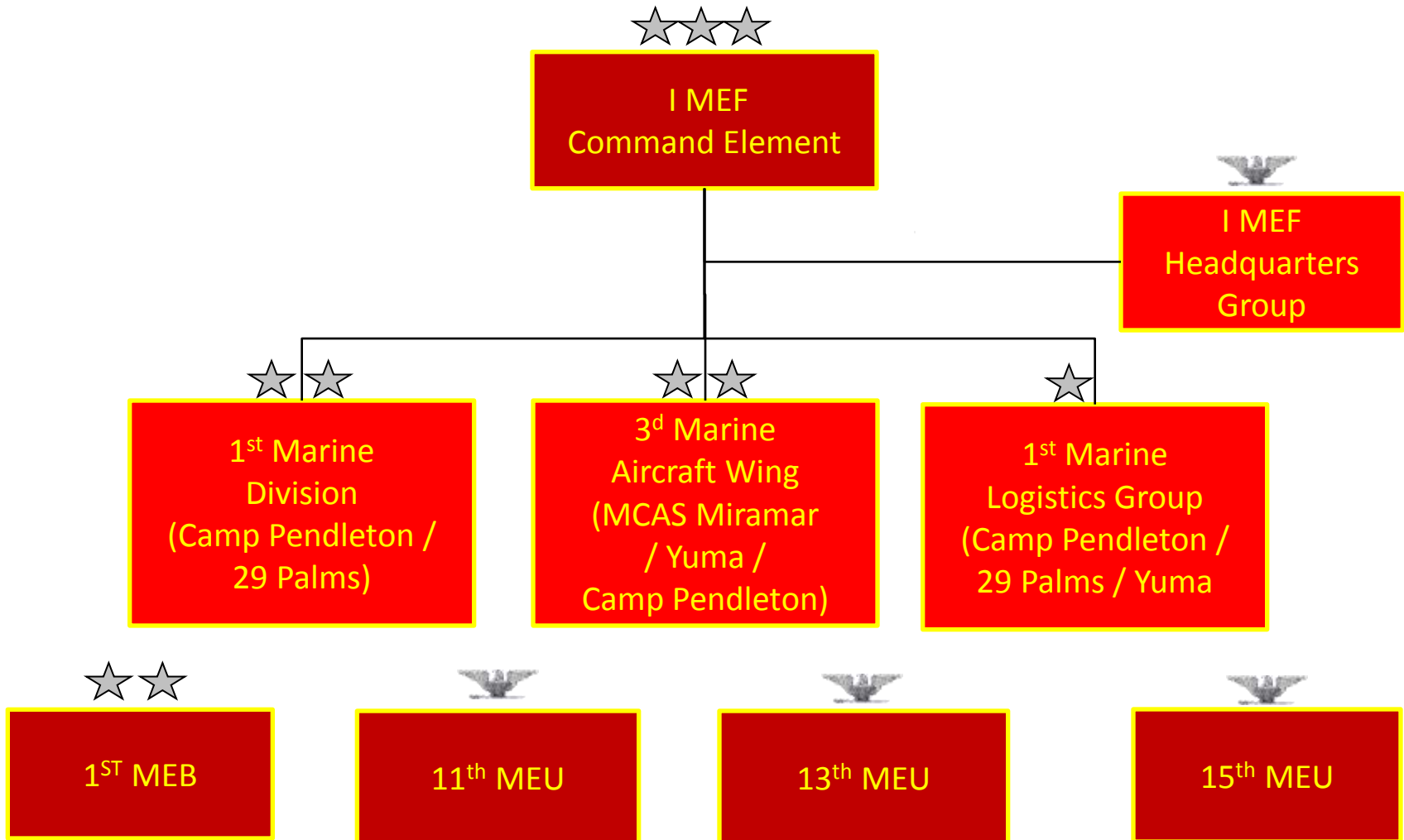
I MEF MISSION STATEMENT

I MEF generates, deploys, and employs combat ready MAGTFs/forces in order to meet Combatant Commander requirements across the range of military operations.



UNCLASSIFIED

I MEF Organization



UNCLASSIFIED



UNCLASSIFIED
LOCATIONS

MC Base Camp Pendleton

- I MEF
- 1st Marine Division
- 1st Marine Logistics Group
- I MEF HQ Group
- 11th Marine Expeditionary Unit
- 13th Marine Expeditionary Unit
- 15th Marine Expeditionary Unit
- 3D Marine Air Wing Element

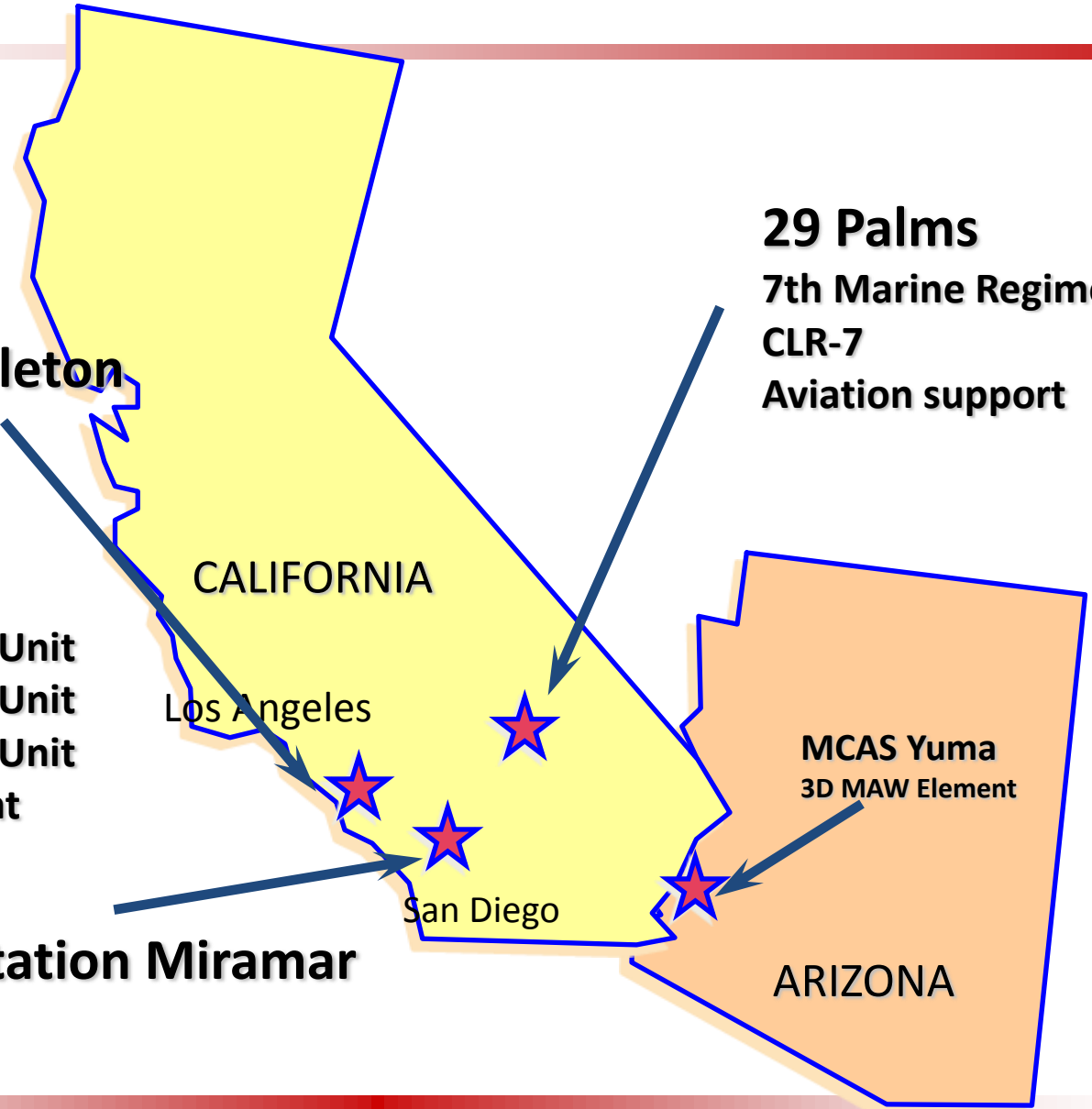
Marine Corps Air Station Miramar

3D Marine Air Wing

29 Palms

- 7th Marine Regiment
- CLR-7
- Aviation support

MCAS Yuma
3D MAW Element





UNCLASSIFIED
I MEF

Mission Essential Task List

MCT 1.1 – Provide Forces

MCT 1.3.1 - Conduct Maneuver

MCT 1.3.2 – Conduct Amphibious Ops

MCT 1.6.6 – Conduct Stability Operations

MCT 3 – Employ Firepower

BLUE indicates USN – USMC Mission Essential Tasks

UNCLASSIFIED



CONTINGENCY RESPONSIBILITIES & CRISIS RESPONSE CAPABILITIES



UNCLASSIFIED

Contingency Responsibilities



- **PACOM**
 - 3 x 5000 Series ConPlans
 - 3 x 5000 Series OPlans
- **CENTCOM**
 - 3 x 1000 Series ConPlans
 - 3 x Bi-lateral Plans

I MEF has equity in five of the top ten planning requirements in the Joint Security Capability Plan

UNCLASSIFIED

UNCLASSIFIED



***1st MARINE EXPEDITIONARY BRIGADE
(1st MEB)***

UNCLASSIFIED

2024 Baseline MEB Organization



Command Element
(844)


14,896 PERSONNEL

** Scalable based on mission*


30 DAYS SUSTAINABILITY

Ground Combat Element
Infantry Regiment (REIN)


3 Inf Bn 


2 Tank Co 

2 LAR Co 

2 AA Co 

3 Arty Btry 


1 EFSS Btry 


1 HIMARS Btry 


2 Cbt Engr Co 


(5,769)


Aviation Combat Element
Composite Marine Air Group


3 JSF Sqdn* 
30 F-35B
* Includes EA capability

1 HMLA Sqdn 
18 AH-1Z / 9 UH-1Y

1.25 HMH Sqdn 
20 CH-53K


4 VMM Sqdn 
48 MV-22


1 VMU Sqdn 
12 Group 3 STUAS
4 Group 4 VUAS


1 KC-130 Sqdn 
15 KC-130J

(5,782)

Logistics Combat Element
Elements of MLG

CLR (-) (Rein) 

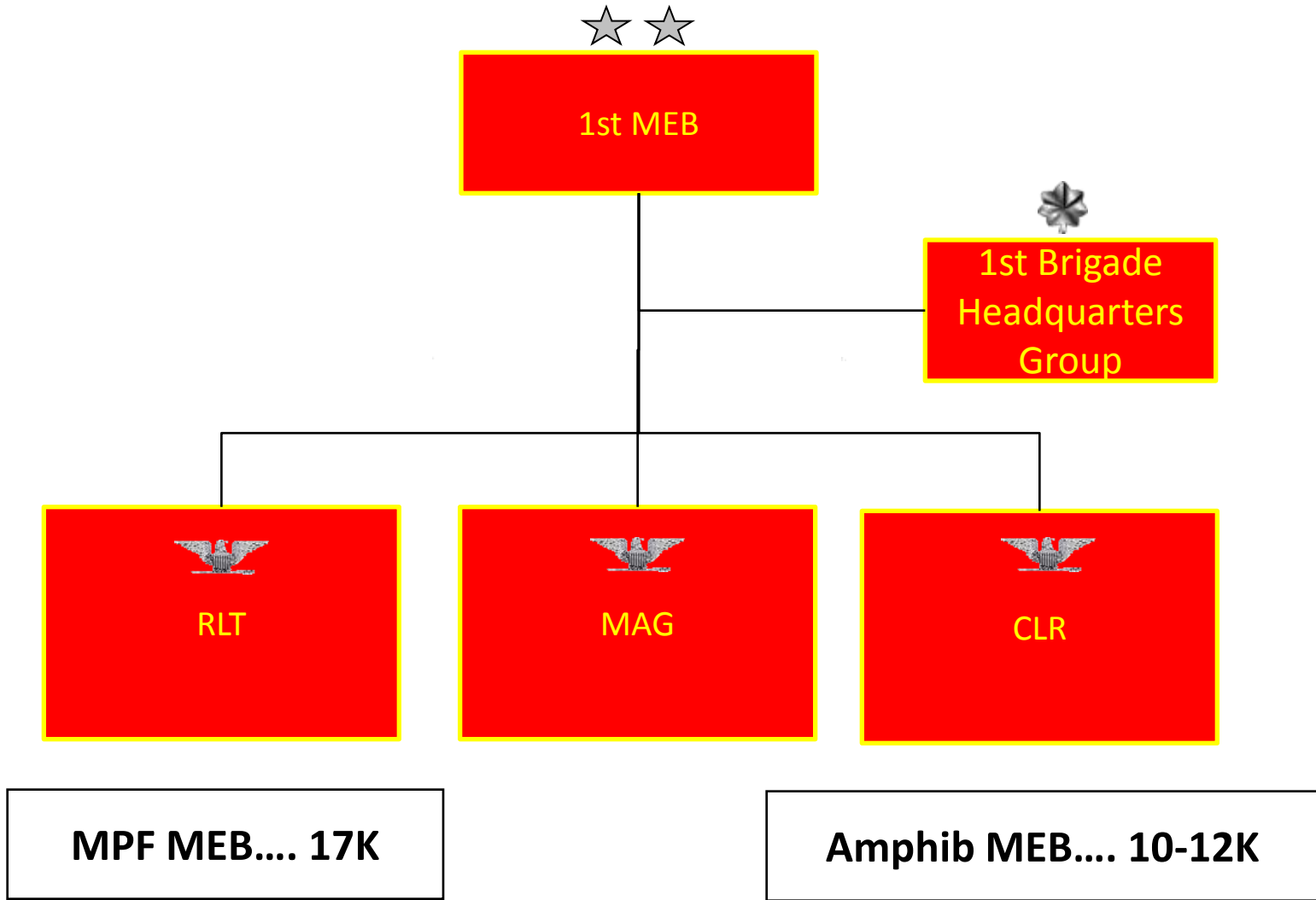
CLB (-) (Rein) 

CLB (-) (Rein) 

(2,501)

UNCLASSIFIED

1st MEB Organization



UNCLASSIFIED

1st MEB MISSION

On order, 1st MEB composites, deploys and employs as a MAGTF in order to meet COCOM and Service requirements across the range of military operations.

Intent :

- 1. Principal OPLAN/CONPLAN and crisis response force until OEF conclusion**
- 2. MEB CE embedded in I MEF Command Element. MEB provides vehicle to facilitate MEF CE training**
- 3. Operational arm of MEF to work with Expeditionary Strike Group-3 and Commander Third Fleet**



UNCLASSIFIED
1st MEB

Mission Essential Task List

MCT 1.3.1 - Conduct Maneuver

MCT 1.3.2 – Conduct Amphibious Ops

MCT 1.6.6.6 – Conduct Noncombatant Evacuation Ops (NEO)

MCT 1.6.6.7 - Conduct Humanitarian Assistance

MCT 1.6.6.9 – Conduct Stability Operations

MCT 1.6.8 - Conduct Counterinsurgency (COIN) Operations

MCT 3 – Employ Firepower

MCT 4.10 – Conduct Civil-Military Operations (CMO)

MCT 4.3.7 – Conduct Prepositioning Operations

MCT 5.5 – Conduct Joint and Combined Operations

Blue indicates USN – USMC Mission Essential Tasks

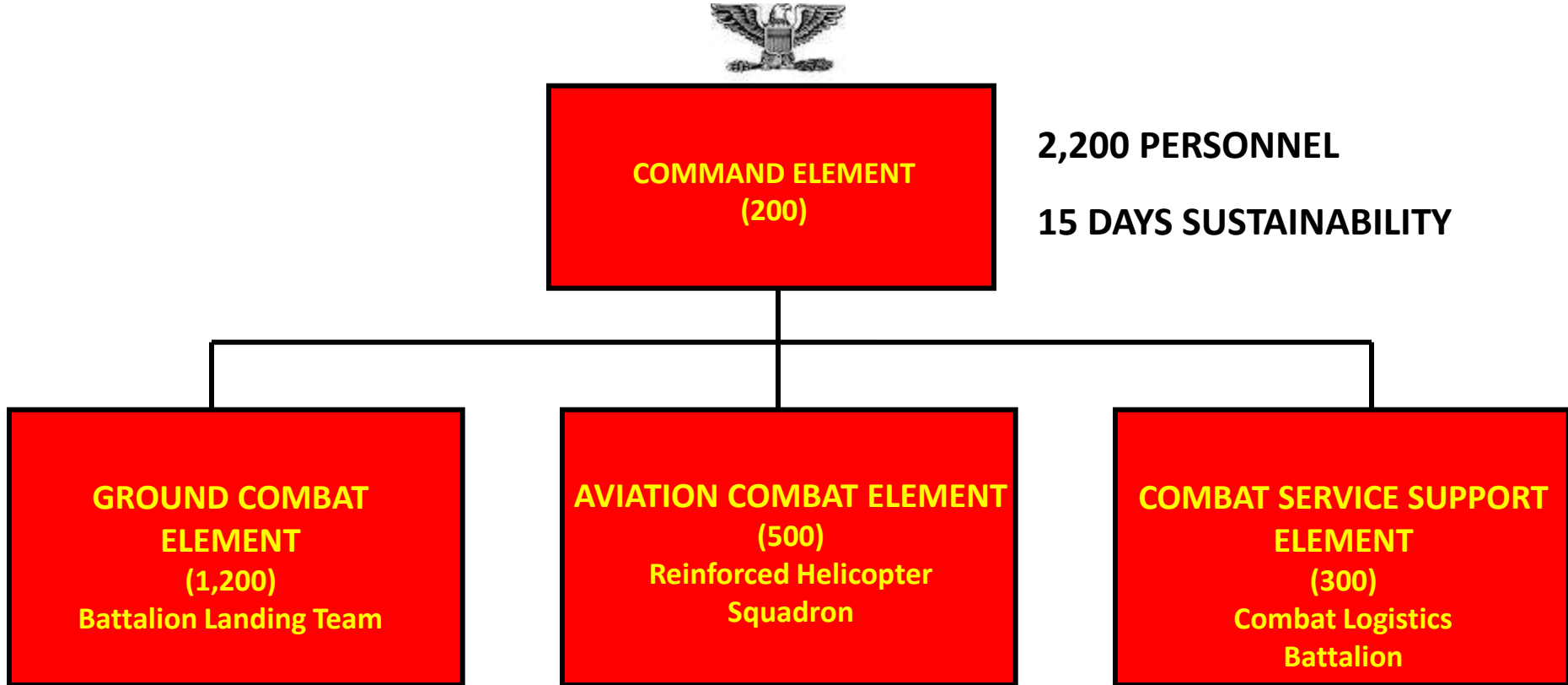
UNCLASSIFIED



Marine Expeditionary Unit



Current MEU Organization



UNCLASSIFIED

Command Element



- **Command and Control**
 - Rapid/Deliberate planning
 - Enable JTF and MPF operations
 - JTF level communications
- **Intelligence**
 - HUMINT
 - Reconnaissance
 - Interrogator-translators
 - Counterintelligence team
 - SIGINT: Radio Battalion detachment
 - Imagery and topographic detachments
- **Firepower**
 - Integrate/synchronize operational fires
 - ANGLICO- Air Naval Gun Fire Liaison Company
 - FORECON- Force Reconnaissance Platoon
 - Security Force – Comprised of a Military Police and LAAD Detachment



UNCLASSIFIED

Ground Combat Element



Battalion Landing Team



Capabilities

- Heliborne Raids
- Mechanized Raids
- Motorized Raids
- Embassy Reinforcement
- Tactical Recovery of Aircraft & Personnel
- Recon & Surveillance
- Counter Mobility
- Counter Insurgency Operations
- Enhanced Urban Operations
- Airfield/Port Seizure



- 1200 Marines & Sailors
- 3 Rifle Companies
- 6 M777 155mm Howitzers
- 14 Amphibious Assault Vehicles
- 5 Light Armored Vehicles
- Anti-Armor Teams
- Combat Engineers
- 4 M1A1 Tanks



UNCLASSIFIED

Aviation Combat Element

HMM (-)(Rein)

VMGR (KC-130) tethered

HMH Det (CH-53E)

HMLA Det (AH-1Z/UH-1Y)

VMA Det (AV8B)

MACG Det

2x MALs Det

MWSS



12xCH-46E



4xAH-1Z



4xCH-53E



3xUH-1Y



6xAV8B

- Aviation Functions*
- 500 Marines & Sailors
 - Assault Support
 - Reinforced company in single lift
 - Long range capability
 - In-flight refueling
 - Tactical ground systems
 - Offensive Air Support
 - FW and RW CAS
 - Precision guided munitions (JDAM)
 - Anti-Air Warfare
 - Aerial Reconnaissance
 - Lightning POD
 - Air Control



2xKC130* tethered

UNCLASSIFIED



UNCLASSIFIED

Combat Logistics Element

Combat Logistics Battalion



Capabilities

Landing Support
General Engineering Support
Intermediate Supply Support
Motor Transport
Intermediate Maintenance
Health Services (Medical / Dental)
Shock/Trauma Platoon
Evacuation Control Center / NEO
Humanitarian Assistance
Military Police
Explosive Ordnance Disposal
General Services (Postal, Disbo, Ammo)

Headquarters Plt

Maintenance Det

Medical Det

Landing Support Plt

Explosive Ordnance Det

Supply Det

Transport Plt

Communications Plt

Engineer Plt

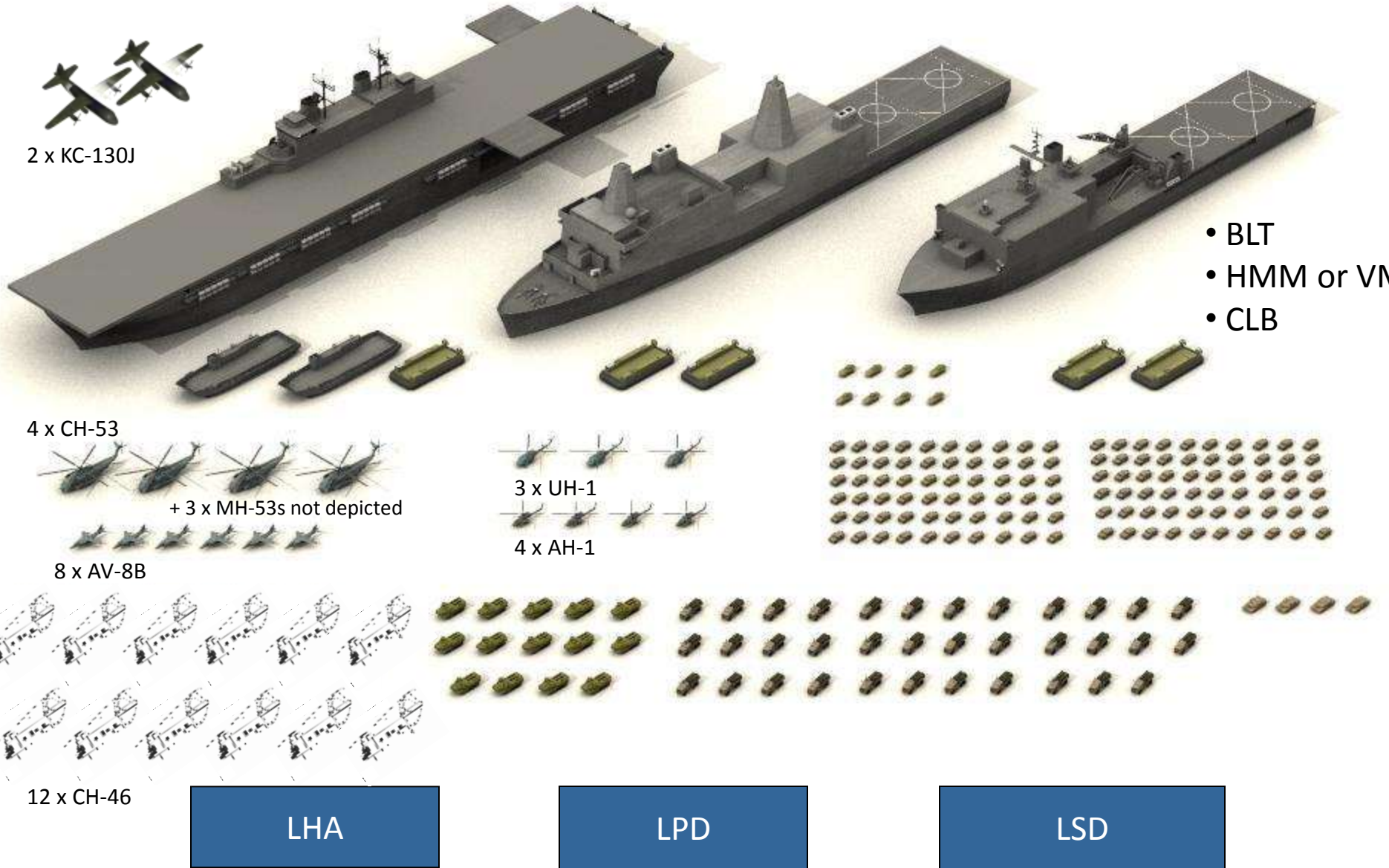


300 Marines & Sailors
20-Trucks (MTVR)
HMMWVs
Wreckers
Forklifts
Bulk Fuel trucks
Water trucks
TWPS (Water Production)
Tank/AAV Retrievers

UNCLASSIFIED

TYPICAL ARG/MEU

~2,200 Marines / ~1,700 SAILORS



Pre-Deployment Training



6 Months

- Phase I: Ashore Training
 - Rapid Response Planning Process
 - Special Operations Training Group Courses
 - MAGTF Integration
 - Enhanced Mojave Viper (29 Palms)



- Phase II: At-Sea Training
 - ARG Interoperability
 - PHIBRON/MEU Integration Training
 - Composite Training Unit Exercise
 - Supporting Arms Coordination Exercise

- Phase III: Final Training Phase
 - Certification Exercise

Tiered Training
 Building Block
 Approach
 Individual Skills
 Special Skills
 Collective Skills
 Certification

UNCLASSIFIED

QUESTIONS?



UNCLASSIFIED

Operation Tomodachi



- MARFORPAC directed I MEF to support III MEF's CBRN radiological monitor, survey and decontamination operations in Japan
- Within 48 hours of notification, I MEF deployed:
 - 47 Marines
 - 1 Sailor
 - 2 MAGTF CBRN Assessment Consequence Management sets
 - Decontamination equipment
- Operations conducted:
 - Radiological survey of over 600 AMCITS and Military personnel in support of military assisted voluntary departure
 - Monitor survey operations conducted at:
 - MCAS Iwakuni
 - NAS Atsui (decontamination and area clearance also conducted)
 - Sendai Airport / Camp
 - USEMBASSY
 - Yamagata Airport
 - Yokota AFB
 - Support provided for 41 days